

THE CONTINUUM IGNITION SYSTEM

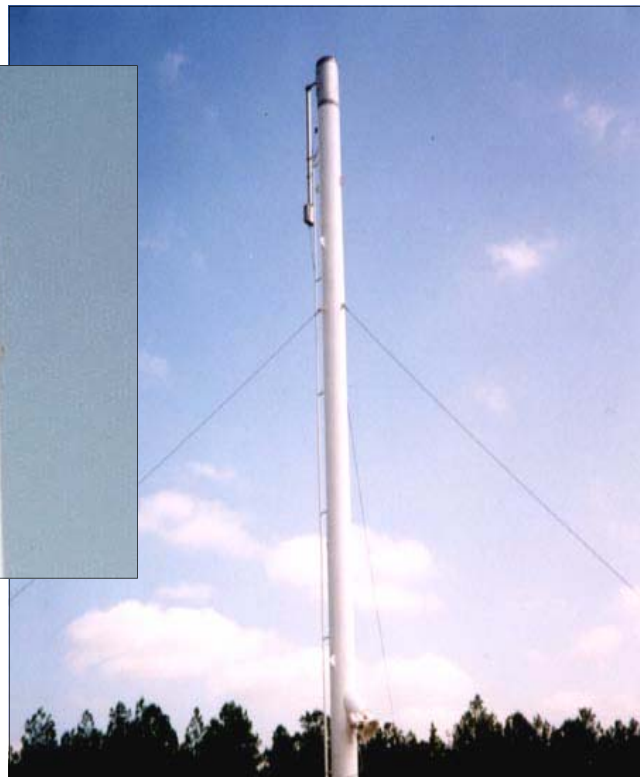
ADVANTAGES

- ▶ Fully retractable for ease of maintenance
- ▶ Low maintenance costs: does not require crane
- ▶ Low maintenance costs: no plant shutdown for maintenance
- ▶ Eliminates need for ladders and platforms
- ▶ Constant re-ignition every 20 seconds, 24 hours a day
- ▶ Eliminates need for pilot gas in most applications

GENERAL DESCRIPTION

The CONTINUUM Ignitor is a durable track mounted device that is capable of sliding up and down the side of the flare. This allows the user to easily retract the ignitor to grade using a pulley and winch system, thus providing a product which is fully and easily serviceable at a very low cost. The CONTINUUM Ignition System can be mounted on vertical as well as horizontal flare systems, and for both onshore and offshore applications. The built in pulley and winch retractibility package will avoid the exorbitant costs involved with renting a crane to service pilots or ignition equipment located hundreds of feet above grade.

The unit utilizes a high voltage electric arc to ignite a combustible air/gas mixture. This arc occurs every 20 seconds for a two second duration (timing is adjustable). The CONTINUUM Ignition System provides a steady, stable ignition source due to the fact that it sparks every few seconds, 24 hours a day, providing constant re-ignition. The CONTINUUM actually arcs inside a slip stream chamber. The slip stream assembly is an alloy tube that diverts some waste gas into a separate chamber, thereby creating a combustible air/gas mixture. This feature is what allows the CONTINUUM to function without pilot gas in most flaring applications.



THE CONTINUUM IGNITOR

THE CONTINUUM IGNITION SYSTEM

DESIGN FEATURES

- Fully retractable for ease of maintenance
- Eliminates need for pilot gas and power
- Solid alloy C-ring design ensures proper spark gap throughout the life of the ignitor
- 100% alloy steel construction
- Current monitoring provides reliable ignition monitoring without thermocouples
- Available UPS (uninterrupted power supply) for AC powered units

SPECIFICATIONS

- IGNITOR MODEL:** 100
- DIMENSIONS:** 11' - 6" long (3.5m)
- MATERIALS:** 304/316 Stainless Steel
- WEIGHT:** 80 lb. (36.4 kg)
- CONTROL PANEL MODELS:** AC — AL (AC power)
SOL (solar power)
- DIMENSIONS:** 12 3/4" x 8" x 6" (324 mm x 203 x 152)
- WEIGHT:** AC - AL — 19 lb. (8.6 kg)
Sol — 55 lb. (25 kg) with battery
- CLASSIFICATION:** NEMA 4 (NEMA 7 option)
- POWER REQUIREMENTS:** 110 VAC, 220 VAC, or Solar Power
- DISTANCE FROM IGNITOR:** Maximum 600 ft. (182 m)

CONTINUUM IGNITOR
WITH SOLAR CONTROL SYSTEM

